



How are man-made materials used to create sculptures inspired by nature?

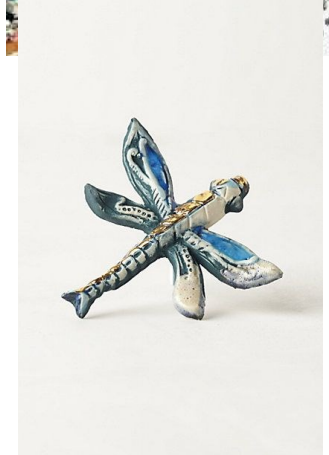
Area of art: Sculpture

| Word | Definition |
|-----------|---|
| Sculpture | A form of art made in 3D created by carving, modelling and constructing. |
| 3D Form | A shape measured by height, width and depth. |
| Malleable | A material that is easily shaped when force is applied– hands, rollers |
| Clay | Clay is a natural material made up of tiny particles of rock. When clay is mixed with enough water, it feels like soft, gluey mud . |
| slip | Slip is a liquid version of clay, it is used to smooth the edges of clay. |
| carving | A cutting /scraping technique to make patterns on the surface of a solid material. |

Key Knowledge and Concepts

Artist: Anna Collette Hunt is a local jewellery designer, who studied in Nottingham. She is known for creating 10,000 bugs. She now sells jewellery, inspired by nature, that she creates using clay.

Skills: To plan, design and make a clay model from observations and imagination. Explore patterns and textures on insects and jewellery. Mix colours to represent nature. Join clay adequately and construct a simple base for extending and modelling other shapes. Create patterns and textures on the surface of the malleable material-clay.



Clay:

Clay is a malleable material that can be moulded into any shape. You can add patterns to clay using a range of tools such as forks, stamps and rollers.



Final Outcome:

To use a range of mark-making techniques and apply them to a clay insect in the style of Anna Collette Hunt. Roll, carve and smooth clay into a mini sculpture.