

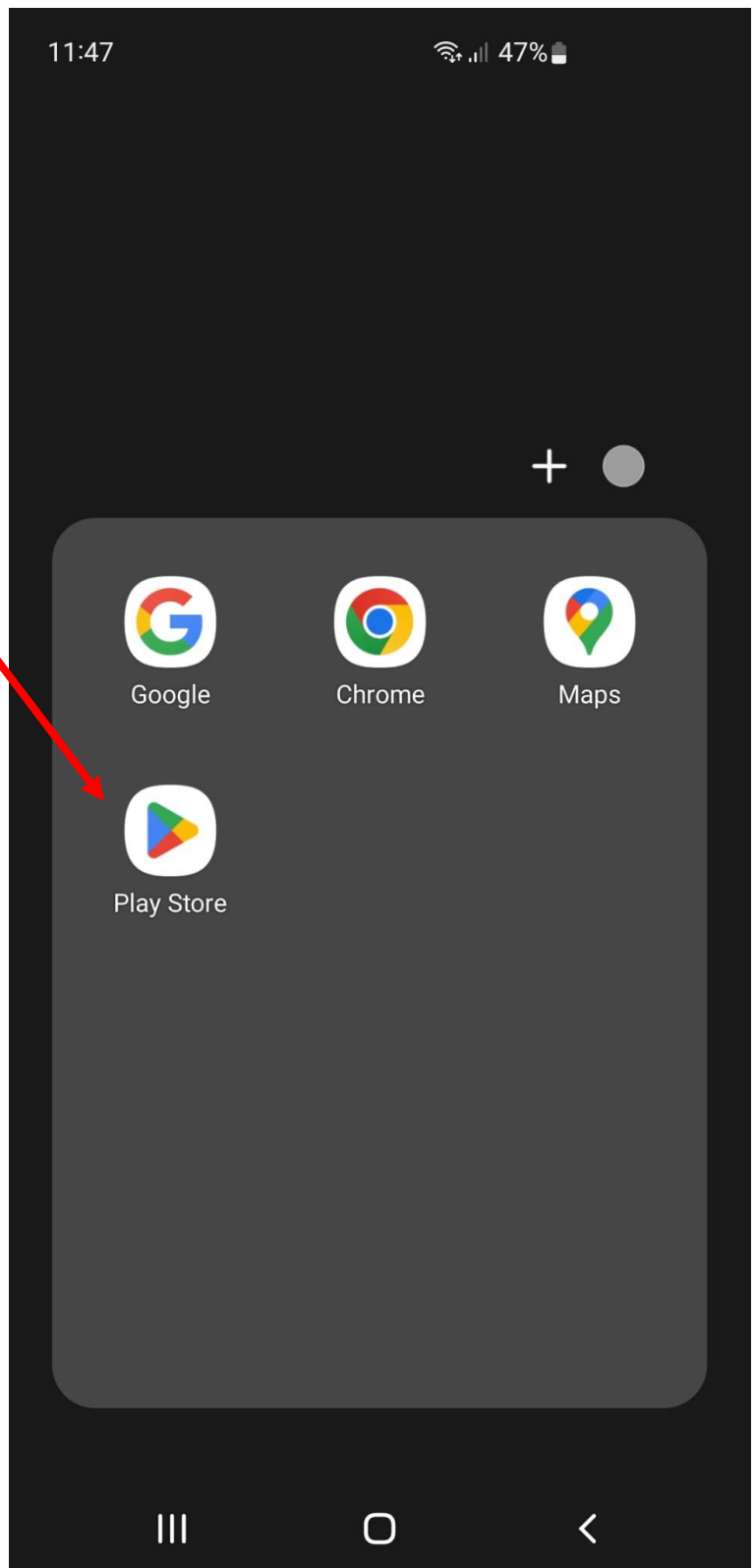
How to enrol onto Reach More Parents by app using an Android device.

This guide will show you how to enrol onto Reach More Parents via the app using an Android device. If you have any issues after following the steps follow the link below for support.

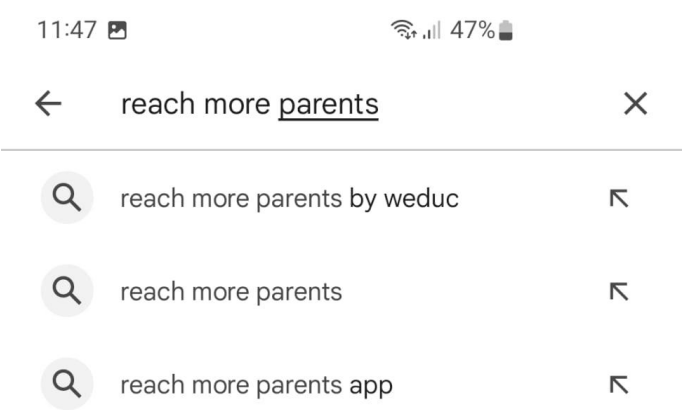
<https://www.reachmoreparents.com/parent-support>



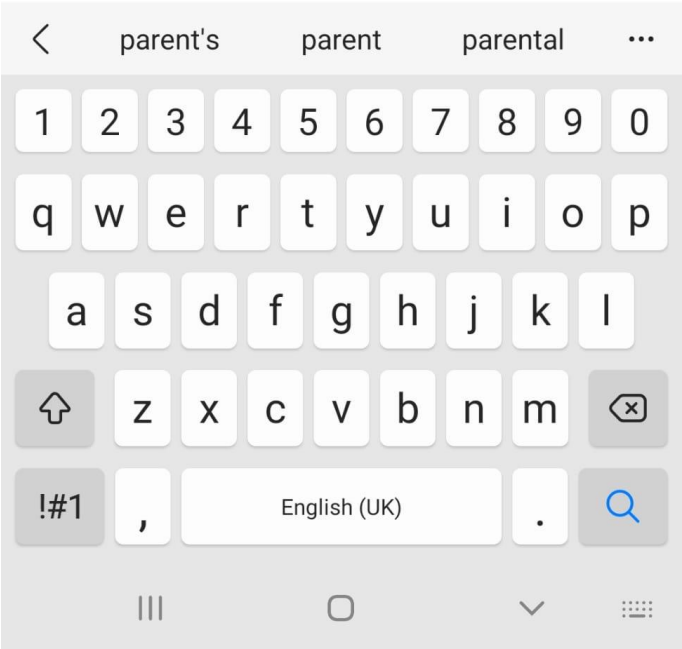
1. Open the Goggle Play Store app



2. Search 'Reach More Parents' in the play store




3. Click install




11:47 46%

← reach more parents by weduc 🔍 🎤

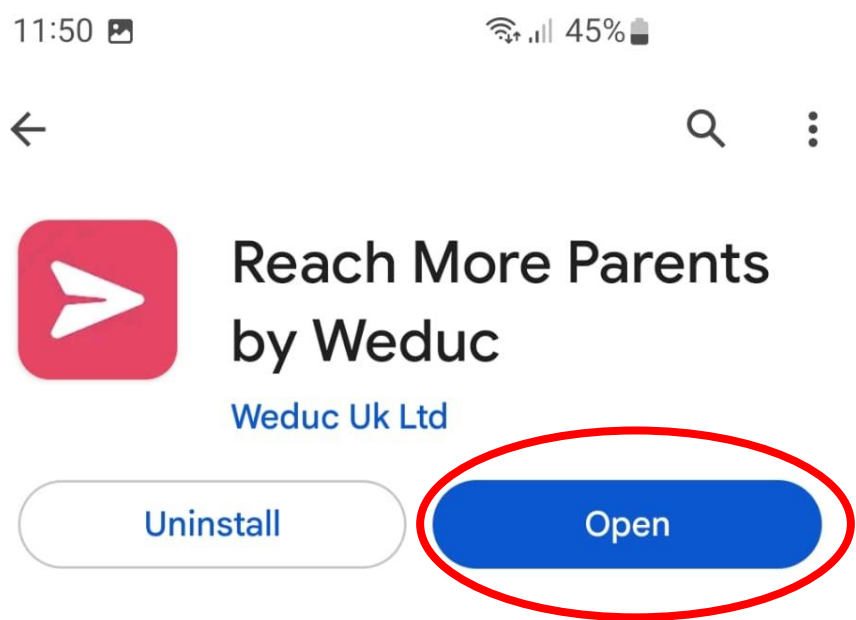


Reach More Parents by We...

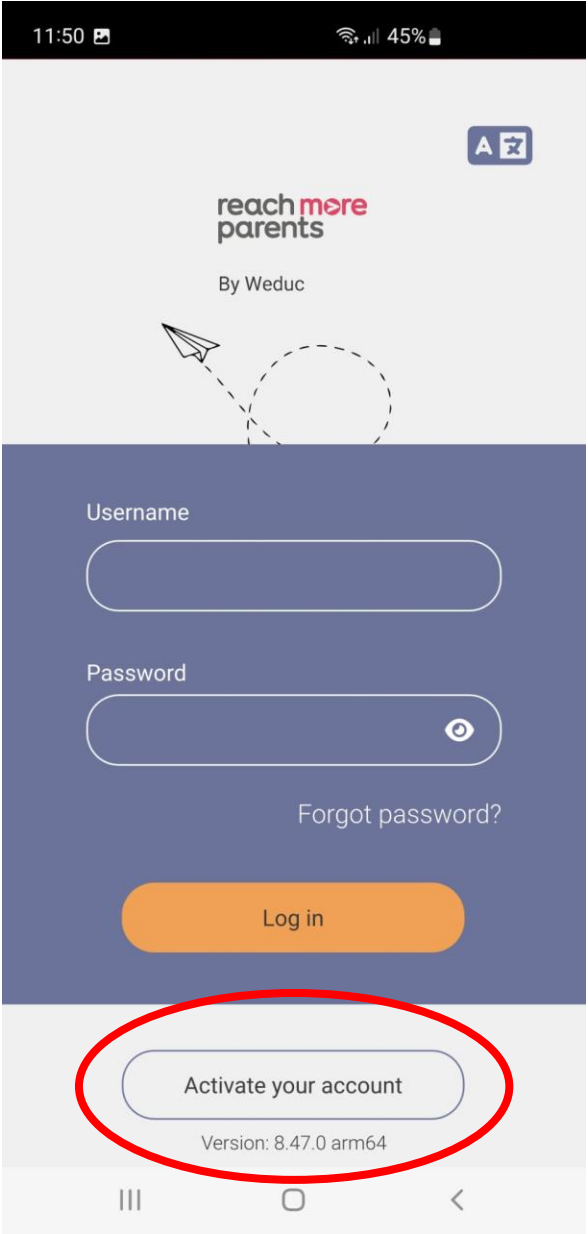
Weduc Uk Ltd



4. Open the app



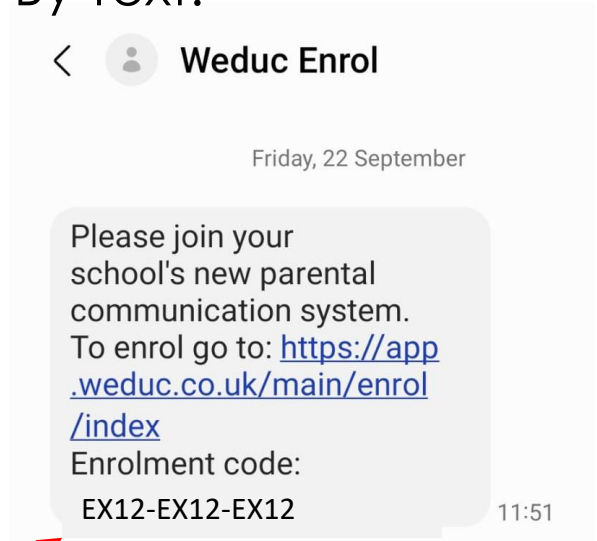
5. Click on 'Activate your account'



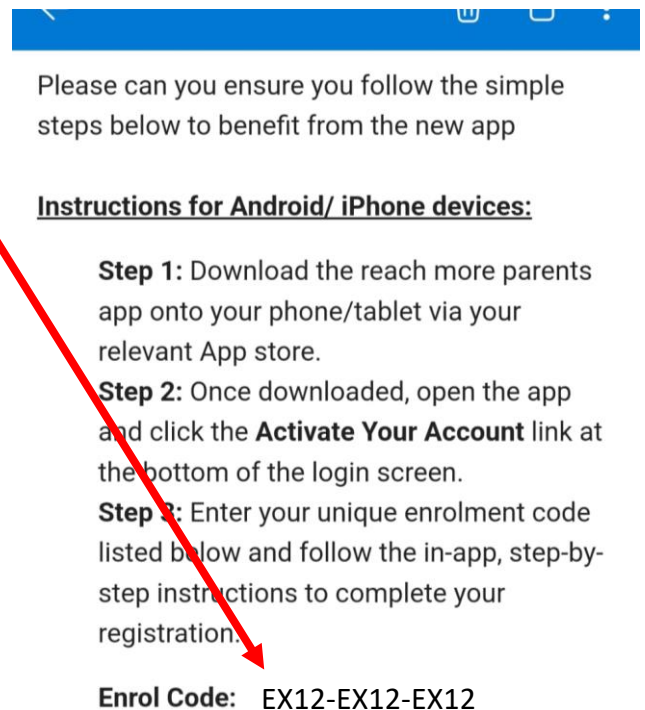
6. Enter the enrolment code that was sent to you via email/text.

The screenshot shows the 'Enrol' screen of the Weduc app. At the top, there's a progress bar with four steps: 1. Enter enrolment code (highlighted in orange), 2. Confirm contact details, 3. Enter PIN code, and 4. Set your password. Below the progress bar, the text reads: 'Please enter your enrolment code. This will have been sent to you via a letter, email or SMS.' There is a text input field labeled 'Enrolment code' containing '####-####-####'. Below the input field is an orange 'Submit' button. The bottom of the screen shows the Android navigation bar.

By Text:



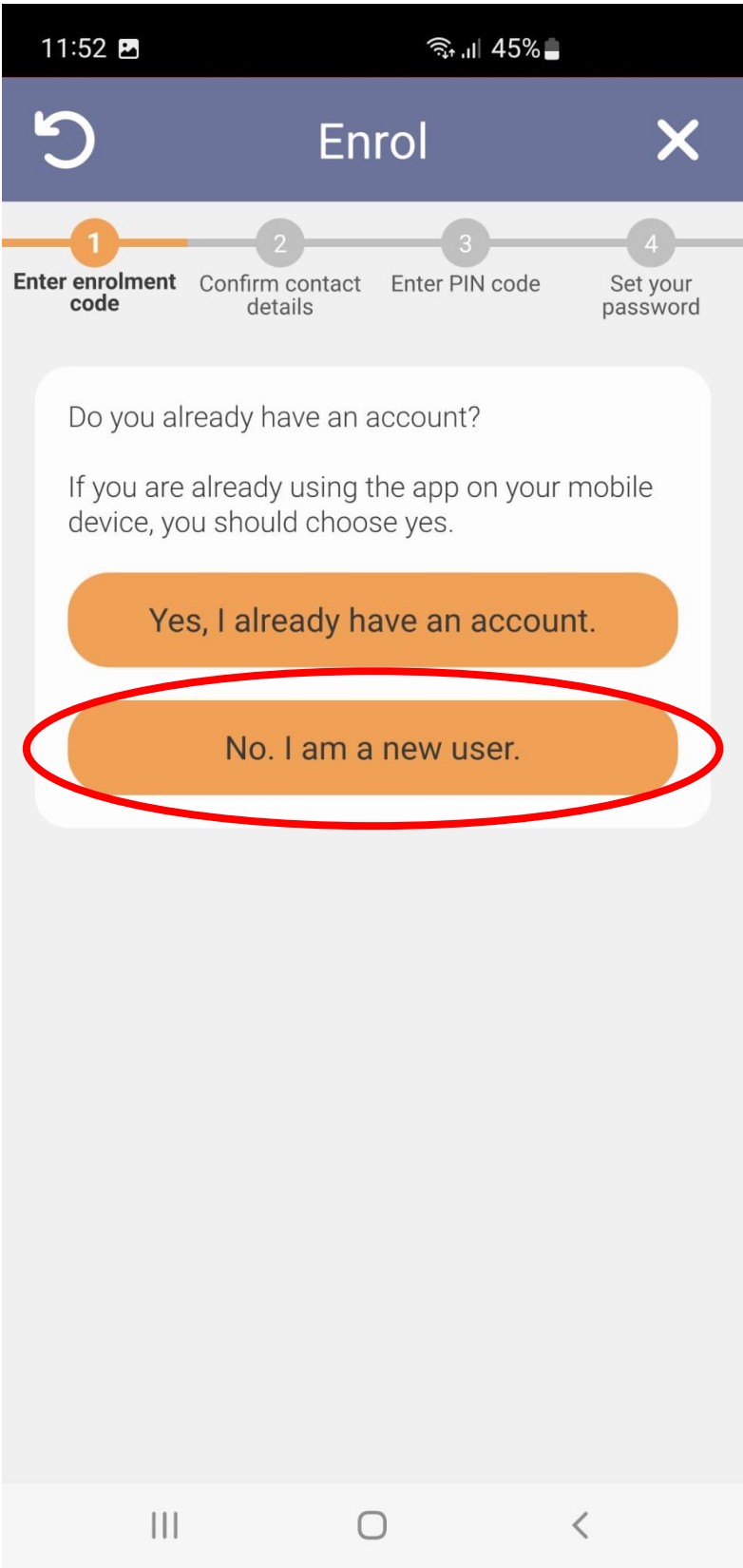
By Email:



If you have any questions or need support in setting up your account then don't hesitate to get in touch with support by email at support@weduc.com

Lookout for updates about your child in the new app!

7. Click No, I am a new user.



8. Fill in/ check your contact details.

11:52 45%

Enrol

1 Enter enrolment code 2 **Confirm contact details** 3 Enter PIN code 4 Set your password

Hi **Example** [Not you?](#)

Please confirm your email address and mobile phone number.

Email address

Mobile number

Next

9. Click Next

10. Enter the pin you received via text/email.

By Text:

Enter enrolment code Confirm contact details **Enter PIN code** Set your password

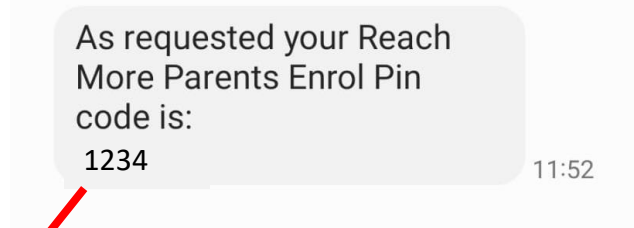
A 4 digit PIN code has been sent to the email address/phone number you provided.

Type this code into the box below.

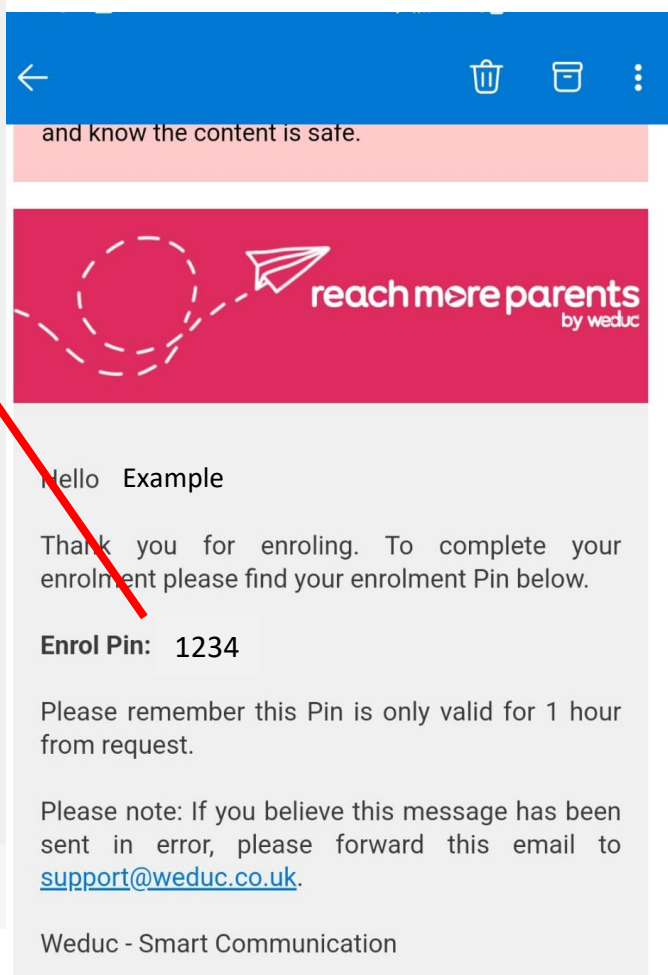
Please note: It may take up to 5 minutes to receive your code. Your code will expire after 1 hour.

Pin code

Submit



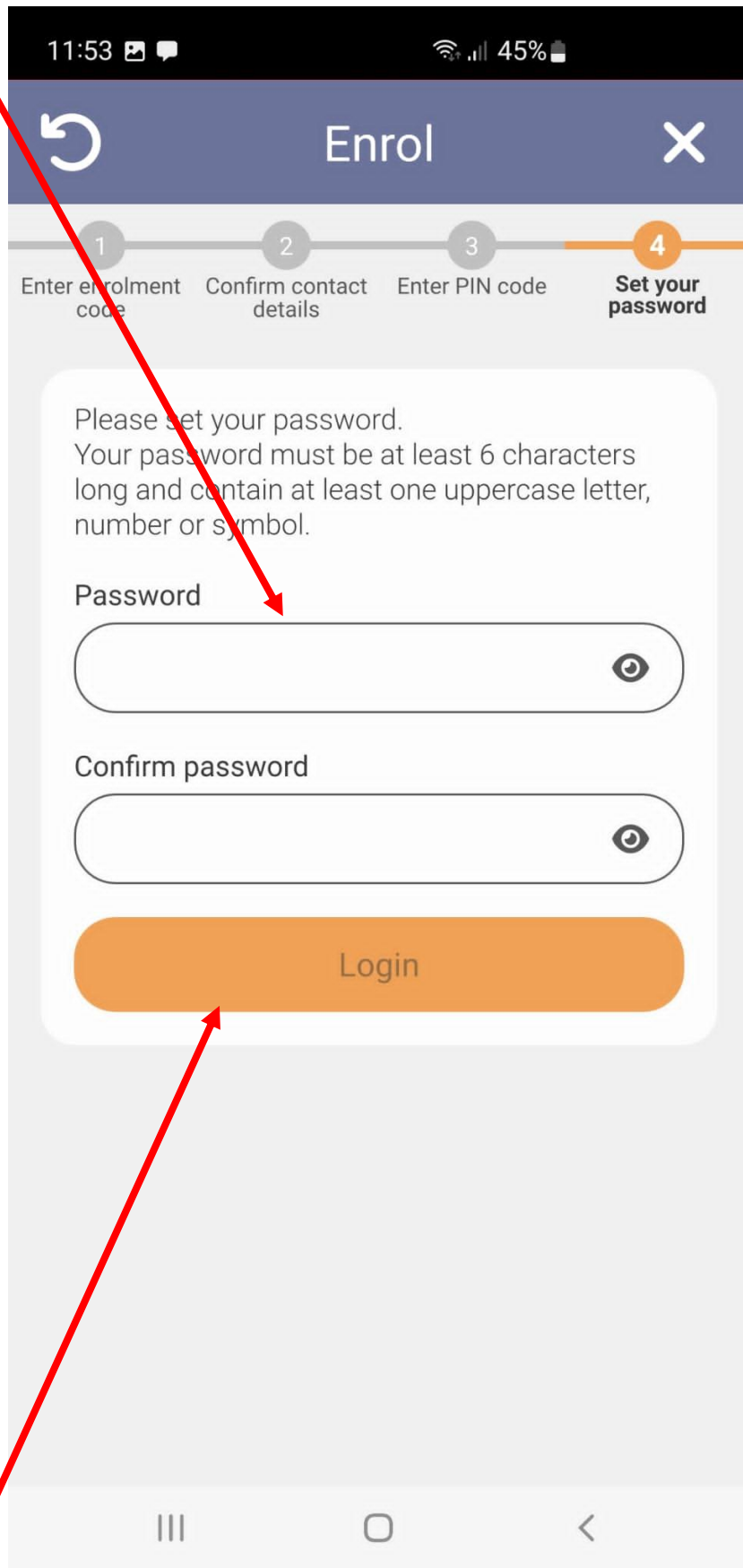
By Email:



PLEASE NOTE

These are example enrolment codes.
Please do not use them as they will not work.

11. Set a password



The screenshot shows the 'Enrol' app interface. At the top, the status bar displays the time 11:53, signal strength, and 45% battery. The app header is dark blue with a back arrow, the title 'Enrol', and a close 'X' button. Below the header is a progress bar with four steps: 1. Enter enrolment code, 2. Confirm contact details, 3. Enter PIN code, and 4. Set your password. Step 4 is highlighted in orange. The main content area is white and contains the following text: 'Please set your password. Your password must be at least 6 characters long and contain at least one uppercase letter, number or symbol.' Below this text are two input fields: 'Password' and 'Confirm password', each with a toggle eye icon. At the bottom of the form is an orange 'Login' button. A red arrow points from the text '11. Set a password' to the 'Password' input field. Another red arrow points from the text '12. Click Login' to the 'Login' button.

11:53 45%

Enrol

1 2 3 4

Enter enrolment code Confirm contact details Enter PIN code Set your password

Please set your password.
Your password must be at least 6 characters long and contain at least one uppercase letter, number or symbol.

Password

Confirm password

Login

12. Click Login